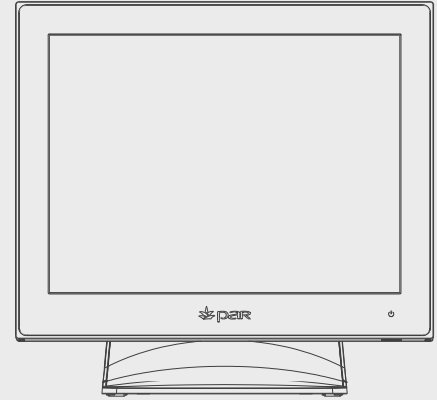


THANK YOU!

Thank you for purchasing the EverServ 600/650/675. With technology specifically designed for your environment, your success is our passion.



1 EXAMINE THE SHIPMENT



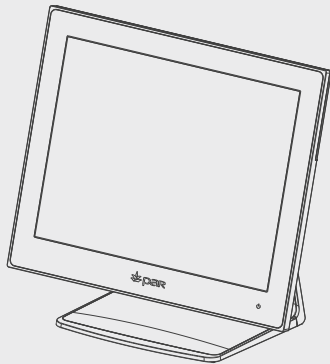
Please ensure all equipment is present.

Report any missing or damaged equipment to your PAR Salesperson or PAR Channel Partner.

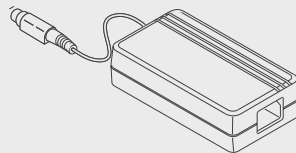


2 INVENTORY COMPONENTS

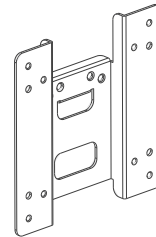
Ensure you have the items listed below in your order.



EverServ 600



Power Supply



VESA Adapter Plate
(M6150-10, M6150-11 &
M6155-10 Models Only)



Power Cord
(Packaged Separately)

3 PRE-INSTALLATION OVERVIEW



- Determine what type of installation you will need to complete for your store.
- Gather information to complete the installation of your new system.
- Inventory the equipment in your order.
- Perform a backup of your current store information.
- Understand pre-installation guidelines for your store.



Before installing your new EverServ 600 system, ensure certain pre-installation guidelines are followed to protect the equipment, the store, and the employees. If you have any questions regarding the following guidelines, contact a PAR sales representative. If a store requires additional electrical wiring or network cabling, you may need to contact an electrical contractor to perform this work.



This material has been created in order to accommodate a wide range of restaurant operations and your specific business practices and system configuration may differ slightly from what is represented in this material. While ParTech, Inc. (“PAR”) takes great care to ensure the accuracy of these materials, all material is provided “as is” without warranty of any kind, either express or implied, including, but not limited to, warranties of merchantability or fitness for a particular purpose. PAR does not make any warranties or representations that the materials will meet your requirements or that the operations of the hardware will be uninterrupted or error free.

Trademark Notices: The PAR logo and PAR EverServ™ are all trademarks of PAR Technology Corporation, the parent company of ParTech, Inc. or its affiliates. All other product names used throughout this material are trademarks of the respective companies. No such use of any trademark is intended to convey endorsement or other affiliation with these companies.

Reproduction: Copyright © 2018 ParTech, Inc. All rights reserved. This publication, or any part thereof, may not be reproduced or transmitted in any form or by any means, electronic or mechanical, including photocopying, recording, storage in an information retrieval system, or otherwise, without the prior written permission of ParTech, Inc., PAR Technology Park, 8383 Seneca Turnpike, New Hartford, NY 13413-4991; Phone: (315) 738-0600.

TABLE OF CONTENTS

Introduction & Connecting Power Page 4

Cable Well & Connecting Cables Page 5

I/O Board Page 6

Optional Components Page 7

VESA MountingPage 13

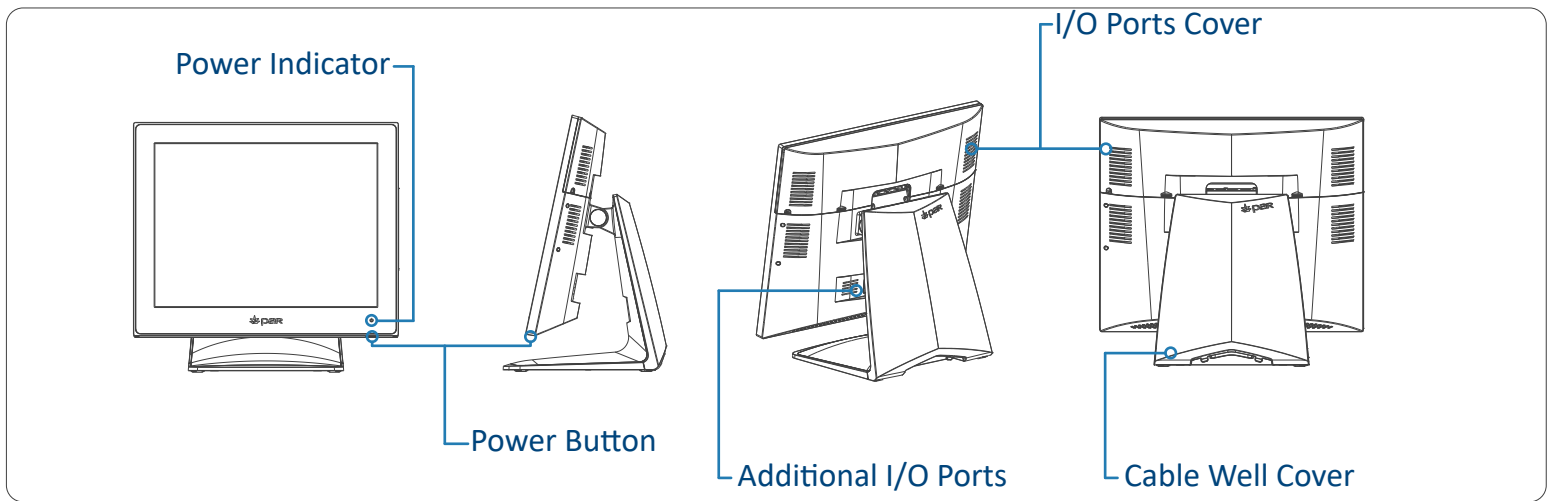
Maintenance & Support Page 14

EVERSERV 600/650/675 SERIES MODELS

REMOVING TERMINAL FROM BOX

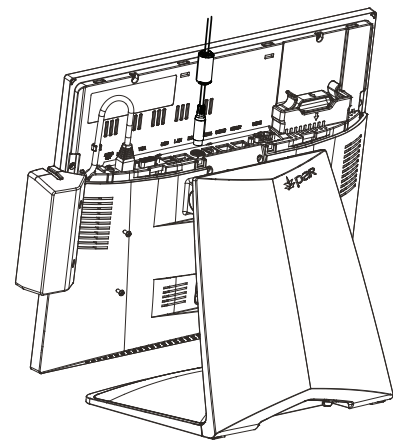
Remove the terminal from the box by grasping the sides of the end caps and lifting up.

! **DO NOT** pull the terminal out of the box by lifting on the anti-static plastic bag. This may result in damage to the terminal.

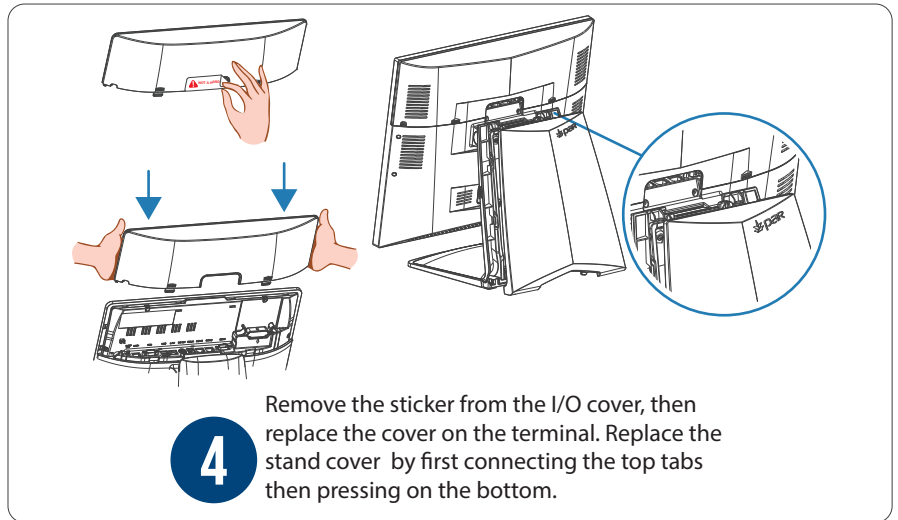
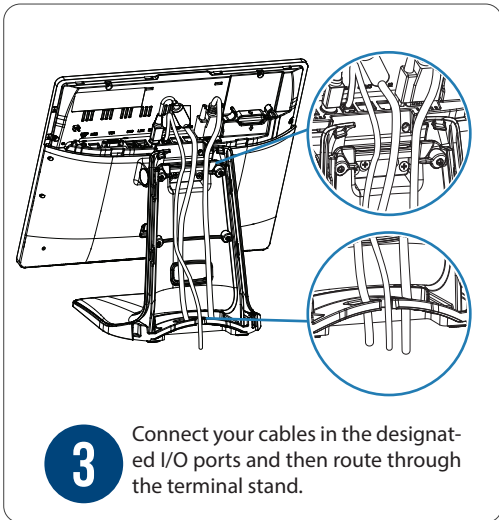
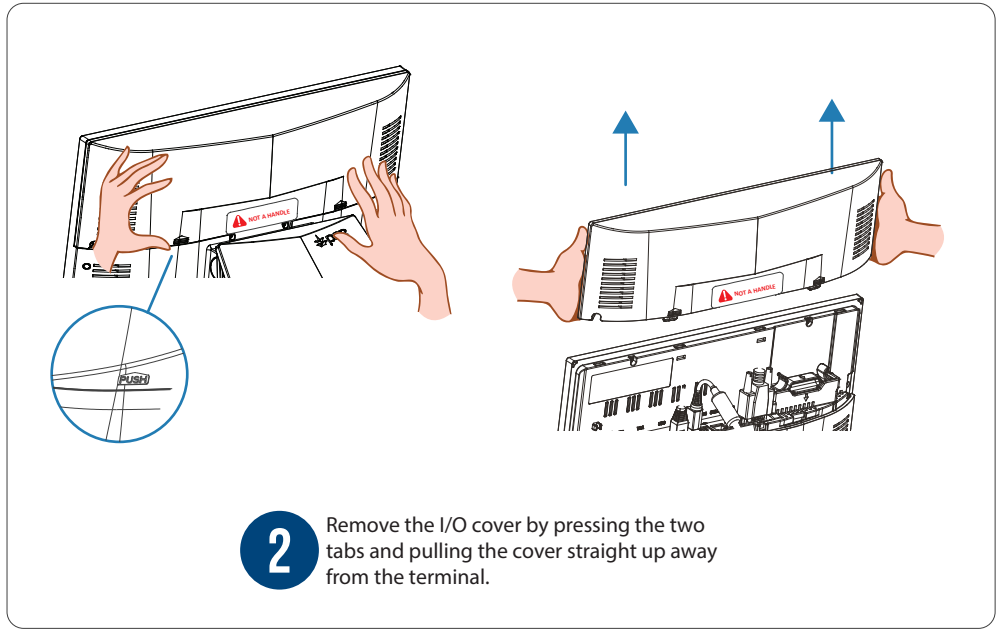
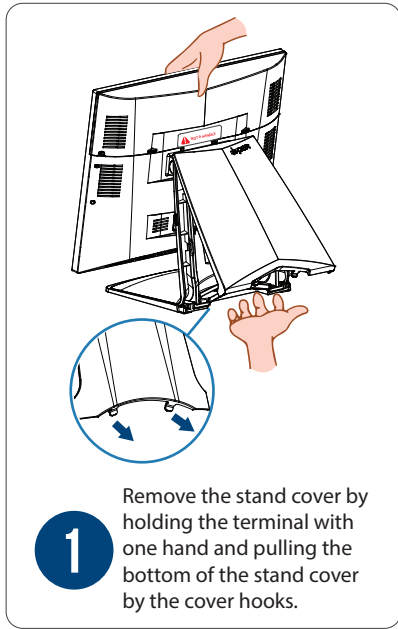


CONNECTING THE POWER CABLE

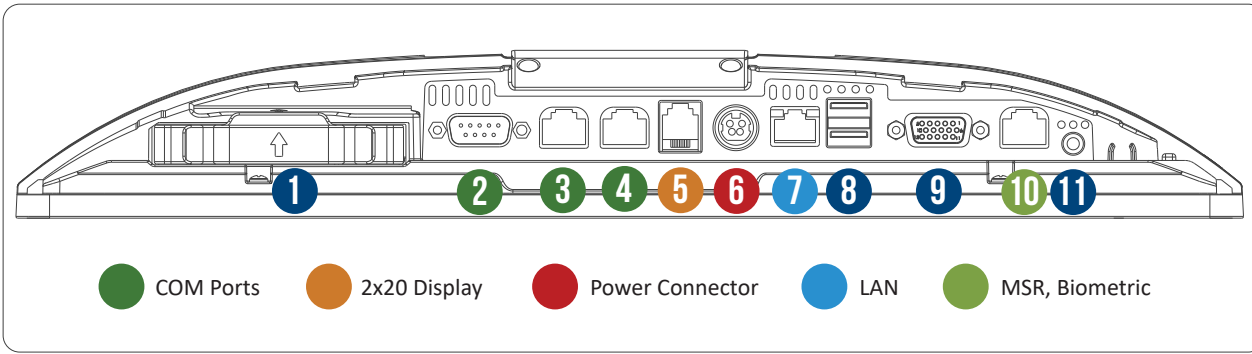
In order to power up the terminal you will be required to connect the power cable.



ACCESSING THE I/O WELL & CONNECTING CABLES

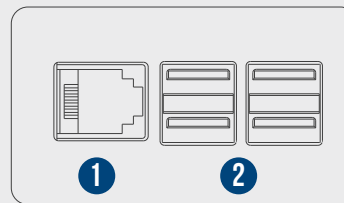
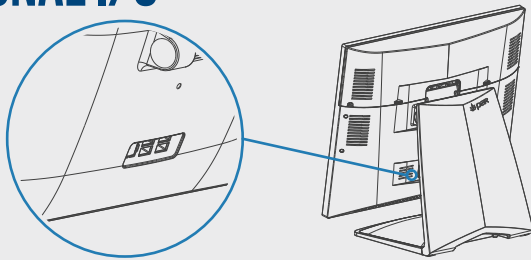


MAIN I/O BOARD



1	SSD	7	LAN
2	COM1 (DB9)	8	USB 2.0
3	COM 2 (RJ45)	9	VGA
4	COM 3 (RJ45)	10	MSR
5	2x20 Display Only	11	Audio
6	Power Input		

ADDITIONAL I/O



1	Cash Drawer
2	USB 2.0

SERVICE & SUPPORT

For service and support after installation or to report any missing or damaged equipment, contact your PAR Sales Representative.



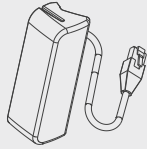
CAUTION BATTERY WARNING: A lithium coin-type battery is installed on the EverServ 600 Series motherboard. If this battery is replaced, it must be replaced with an equivalent battery type. Dispose of the used battery according to the local disposal instructions.

SAFETY

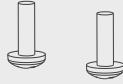
- Before connecting cables or devices to connector wells, please turn off the power first thus preventing potential ESD damage.
- The service related to human safety is not allowed because this device may have the possibility of the radio interference.
- Risk of explosion if battery is replaced by an incorrect type. Dispose of used batteries according to the instructions.
- The EverServ 600 series terminals are EMC compliant for Class “A” digital device business purposes. The Buyer and/or Seller is advised that these limits are intended to provide reasonable protection against harmful interference in a commercial environment. Equipment is not intended for home use.

UK PARTECH, INC
CA Centurion House, London Road,
 Staines-upon-Thames, TW184AX, UK

INVENTORY COMPONENTS



MSR Unit

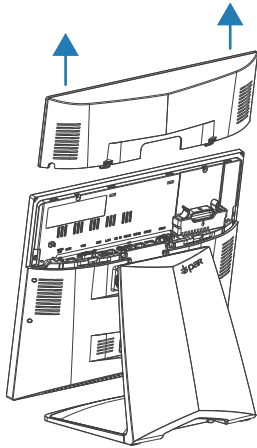


(2) M3x14
Phillips Screws

SOLD SEPARATELY

The installation requires the following tools:
Phillips head screwdriver

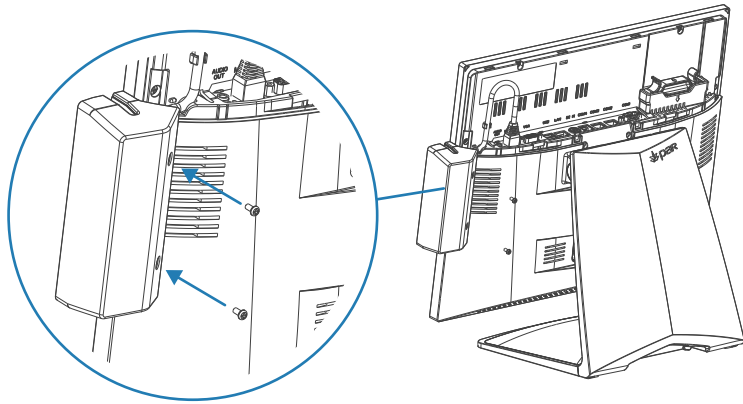
NOTE: There are several options for the MSR.
Your product may look different than the
image below.



Power down the terminal.

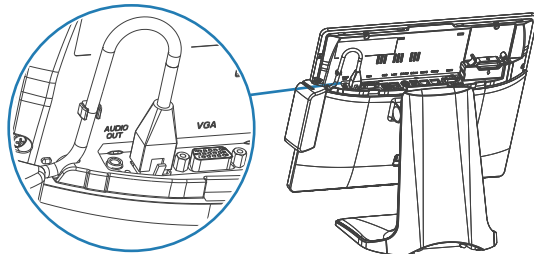
1

Remove the I/O cover by pressing the two tabs and pulling the cover straight up away from the terminal.



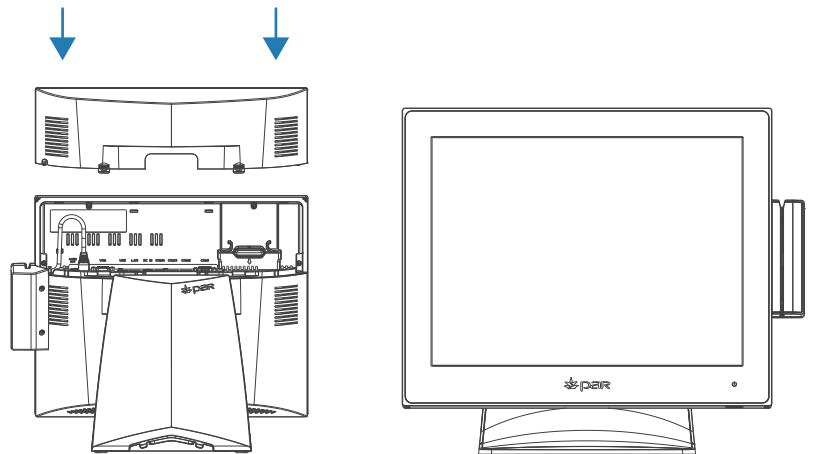
2

Attach the MSR/Biometric Unit to the terminal using the included screws.



3

Connect the MSR cable to the MSR port on the I/O Board. Once connected route the cable through the cable clips.



Replace the I/O cover.
Power up the terminal.

INVENTORY COMPONENTS

Ensure you have the following items in your delivery:

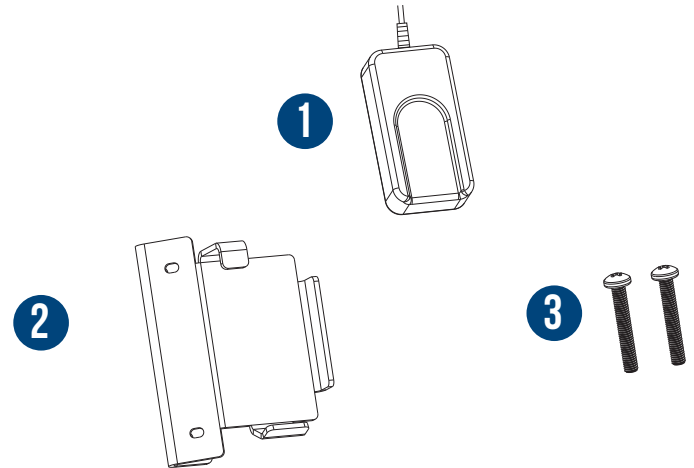
- 1 - Biometric Scanner
- 2 - Bracket Assembly
- 3 - (2) M3x20 Phillips Screw

TOOL REQUIREMENTS

The installation requires the following tools:

Phillips head screwdriver

SOLD SEPARATELY



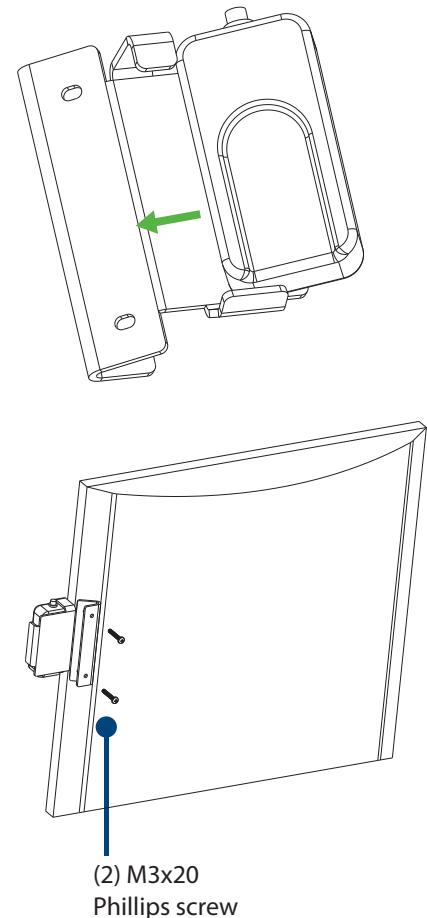
INSTALLING THE BRACKET ASSEMBLY

Install the Scanner into the Bracket Assembly by inserting from the side, then snap into place.

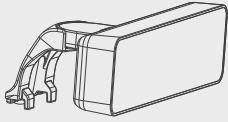
Next, install the Bracket Assembly by lining up the bracket screw holes with the insert holes on the back of the terminal.

Secure the Bracket to the terminal with the included M3x20 Philips Screws.

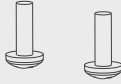
Rout the Scanner cable to the I/O Cable Well.



INVENTORY COMPONENTS



Customer Display



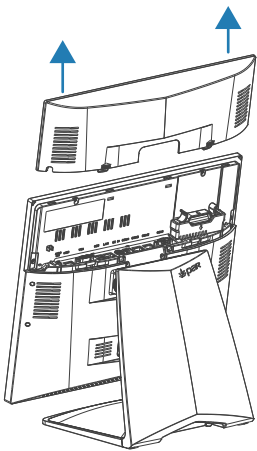
(2) M4x12
Philips Screws

SOLD SEPARATELY

The installation requires the following tools:
Phillips head screwdriver



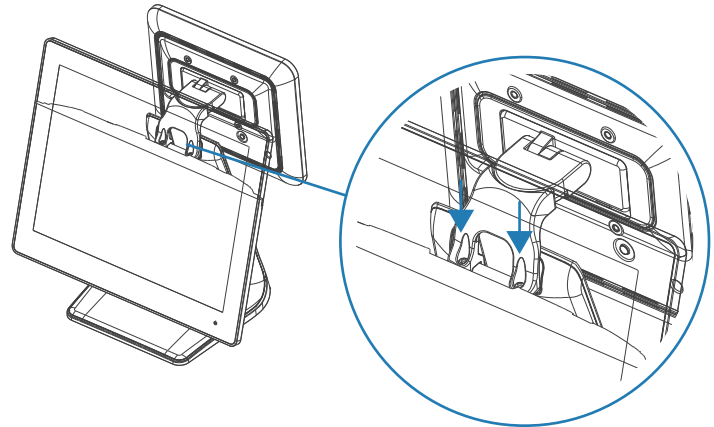
Before installing your new EverServ 600 customer display you may need to enable the VGA 12v power. If you are installing the K6622, K6624, K6622T, K6624T you will need follow the instructions on the back after install.



Power down the terminal.

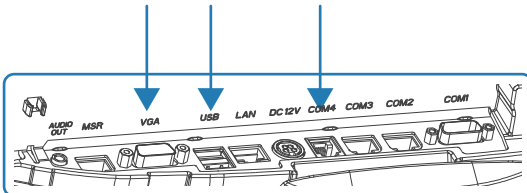
1

Remove the I/O cover by pressing the two tabs and pulling the cover straight up away from the terminal.



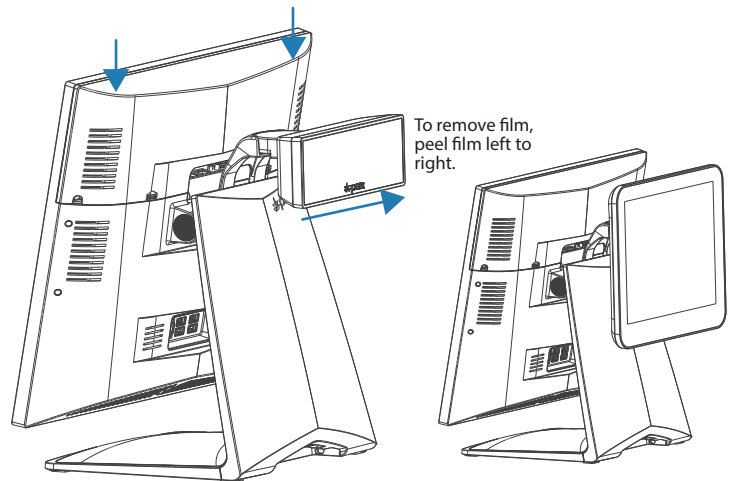
2

Attach the Customer Display to the terminal stand using the included screws.



3

Depending on Customer Display use the VGA, USB or COM 4 (2x20 Display) ports to connect display to terminal.



To remove film, peel film left to right.

Replace the I/O cover.

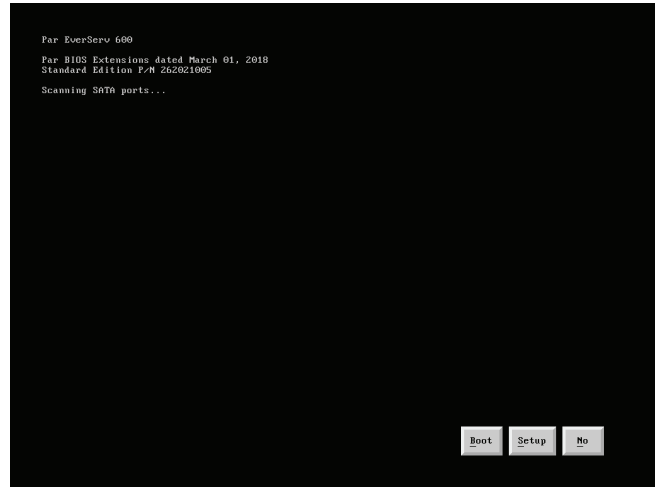
Peel film from display pulling left to right.

Power up the terminal.

CUSTOMER DISPLAY 12V POWER SETUP

K6622 | K6624 | K6622T | K6624T

*BIOS Version may differ from images shown

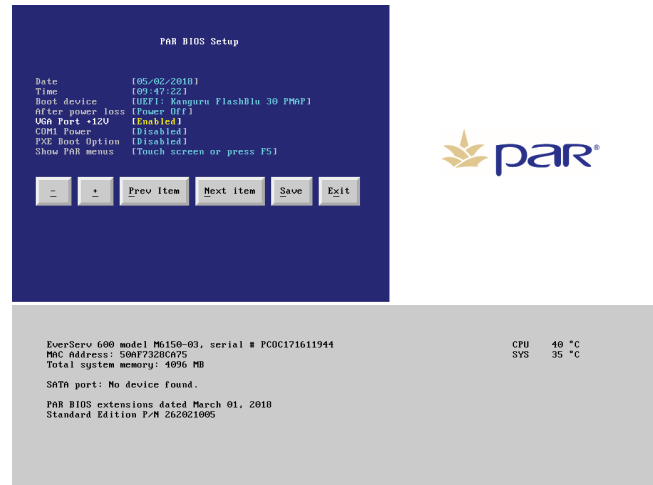
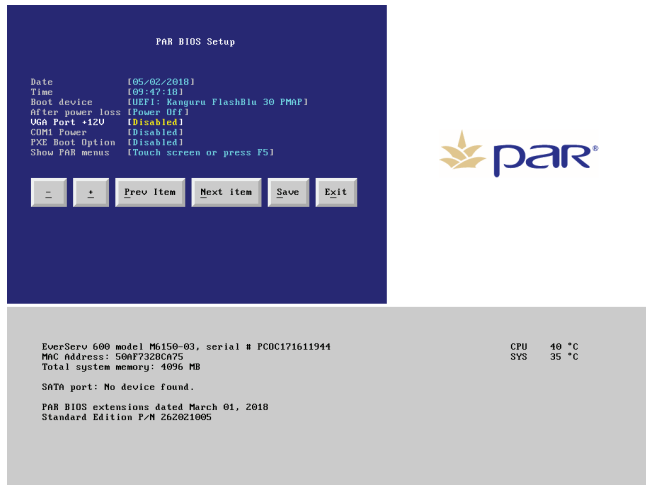


1 Begin by powering up the terminal. When you see the pineapple touch the screen.

*BIOS Version may differ from images shown

2 When the PAR BIOS Extensions screen appears, press "Setup" button.

*BIOS Version may differ from images shown



3 When the PAR BIOS Setup screen appears, press the "Next Item" button until the VGA Port +12v is selected.

*BIOS Version may differ from images shown

4 When the VGA Port +12v is selected, press the "+" to Enable the 12v power.

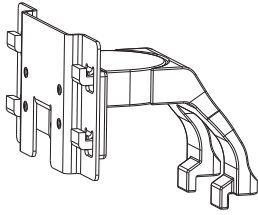
*BIOS Version may differ from images shown



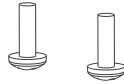
5 Once you have enabled the 12v power, press the "Save" button then press the "OK" button that appears below.

6 Once you have Saved, press the "Exit" button then press the "Yes" button that appears below. The terminal will reboot and the display will be ready to use. 2nd screen functionality will automatically be configured.

INVENTORY COMPONENTS



Mounting Bracket



(2) M4x12 Phillips Screw

The installation requires the following tools:

- Phillips head screwdriver

SOLD SEPARATELY

The installation requires the following items sold separately from the kit:

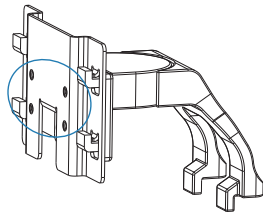
- Payment device
- ENS adapter bracket kit for your specific payment device:

Payment Device	ENS Conversion Kit
Ingenico iSC250	367-3442-1-B
Verifone MX915/925	367-3438-1-B
Ingenico iSC480	367-3446-1-A

See <https://www.ens-co.com/howtobuy/> for more

1

Assemble the ENS adapter bracket to the (4) holes in the PAR mounting bracket according to the instructions included in the ENS kit and using the PAR mounting bracket in place of the ENS Genesis base.

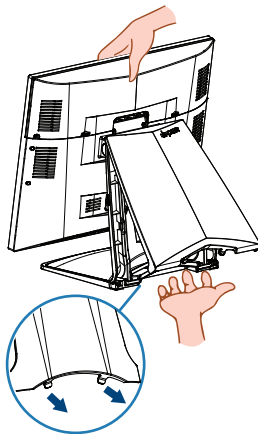


2

Attach the payment device to the ENS adapter bracket according to the instructions included in the ENS kit.

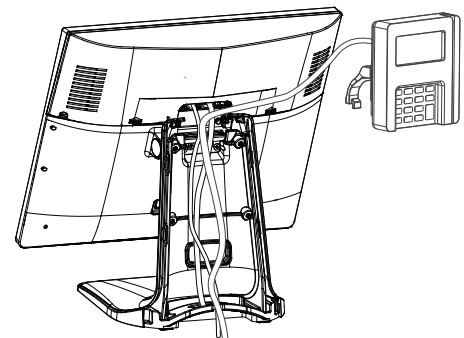
3

Remove the stand cover by holding the terminal with one hand and pulling the bottom of the stand cover by the cover hooks.

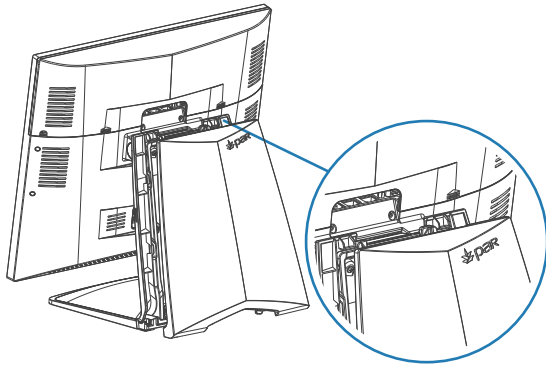


4

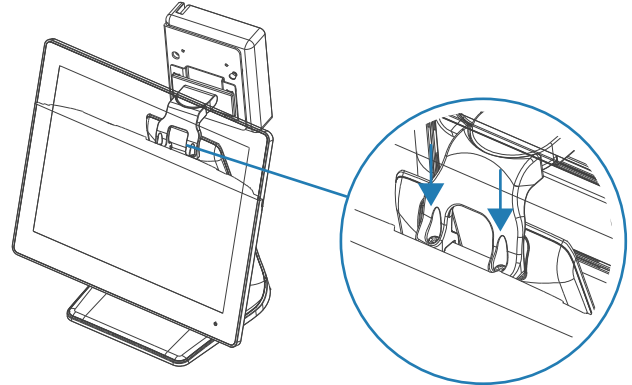
Route the power and LAN (if the payment device uses ethernet interface) cable(s) through the terminal stand.



INSTALLATION INSTRUCTIONS CONTINUED ON NEXT PAGE

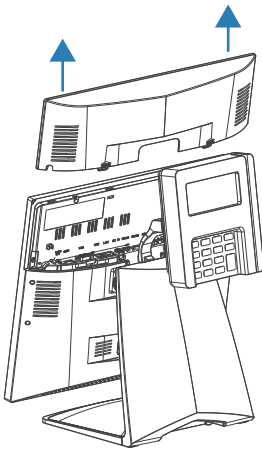


5 Replace the stand cover by first connecting the top tabs then pressing on the bottom.

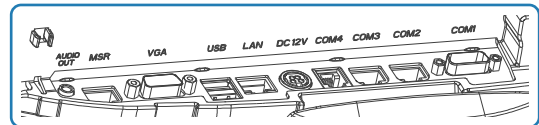


6 Attach the payment assembly to the terminal stand using the included screws. Tighten the cable(s) routed through the stand.

If the payment device uses a USB or serial interface:

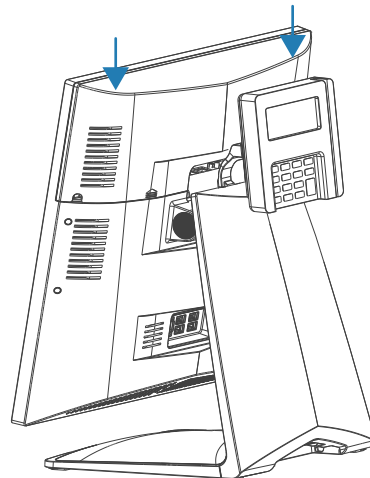


7 Remove the I/O cover by pressing the two tabs and pulling the cover straight up away from the terminal.

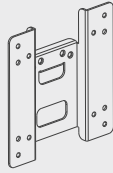


8 Connect the payment device cable to the terminal I/O.

9 Replace the I/O cover.

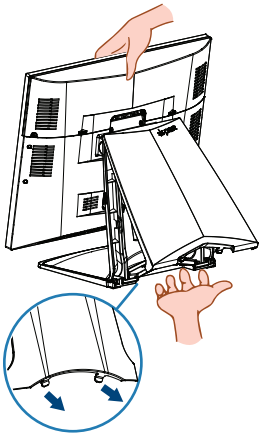


INVENTORY COMPONENTS

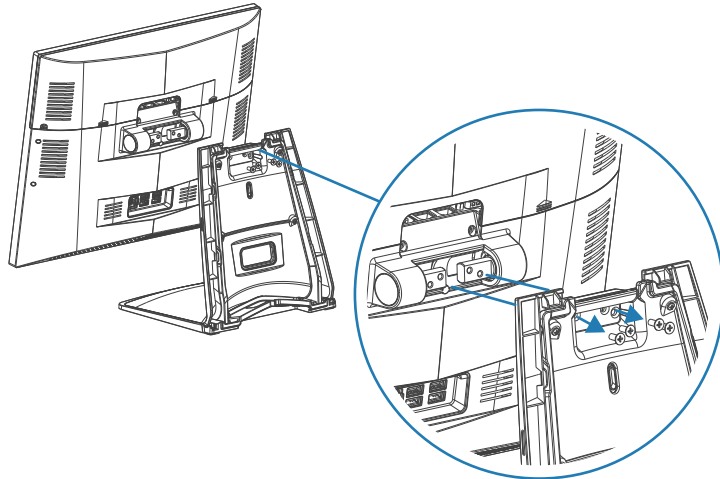


VESA Adapter Plate

The installation requires the following tools:
Phillips head screwdriver

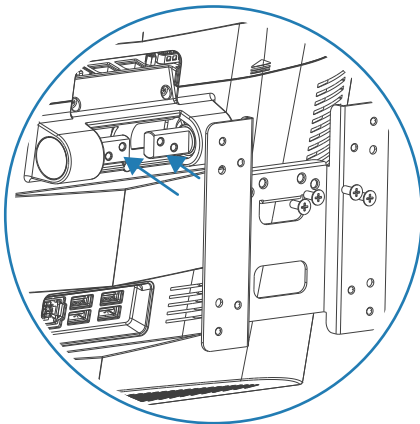
**1**

Remove the stand cover by holding the terminal with one hand and pull the bottom of the stand cover by the cover hooks.

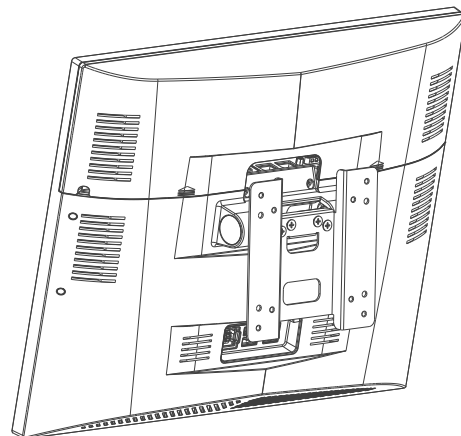
**2**

Remove the four screws connecting the stand to the touch screen.

KEEP THESE SCREWS FOR RE-USE.

**3**

Using the four screws from the stand (Step 2) connect the VESA Adapter Plate to the touch screen.



The terminal is now ready to be wall or pole mounted to customer provided mount.

ROUTINE MAINTENANCE

CARE OF EQUIPMENT

Prevent costly damage to your equipment:

- Do Not use equipment in direct sunlight or outdoors where exposed to weather and other natural elements.
- Never allow a unit to drop
- Never allow napkins, boxes, or other objects to block air vents on the printers, videos, PCs, or registers. These units have to "breathe" to operate efficiently.
- Make sure nylon or rubber grommet (washer) protects each hole punched through the counter top and other metal surfaces. Metal edges may cut through cables.
- Never break open a roll of coins by striking it against the cash drawer.
- Never switch a cash drawer with any other housing (case). The cash drawer and its housing are a matched set.
- Never drag a printer. Dragging weakens the cable. Lift a printer to move it.
- Always turn off or unplug units during power failures.
- Never unplug a unit when the power switch is on.

CLEANING EQUIPMENT

Clean the surfaces of the terminals often:

1. Turn off the unit.
2. Dampen a clean towel with carbonated water. Make sure the towel is damp, not saturated. Do not use ammonia based cleaning products.
3. Wipe off the unit with the damp towel. Never pour carbonated water directly on unit.
4. When done, turn the unit back on.



WARNING: Never use abrasive materials to clean the touch screen on a register. A scratch on the surface could disable the register, and result in costly repairs.

SUPPORT INFORMATION

For Service:

USA: 800.382.6200

Canada: 800.387.4963

Driver Support:

support.partech.com

Parts:

USA: 800.PAR.PART

Canada: 800.387.4963