



Food. People. Nothing in Between.



# System Guide

This page was intentionally left blank

# TABLE OF CONTENTS

<b>5</b>	Your Helix Terminal
<b>5</b>	Unboxing the terminal
<b>5</b>	Care of equipment
<b>6</b>	Main I/O Connections
<b>6</b>	Connecting power to the terminal
<b>6</b>	Powering the terminal ON/OFF
<b>7</b>	Installing the Biometric Reader (K6252)
<b>8</b>	Installing the Magnetic Swipe Reader (K6251)
<b>9</b>	Installing the 2x20 Customer Display (K6253)
<b>10</b>	Installing the 9.7" Customer Display (K6254 / K6254T)
<b>11</b>	I/O Expansion Hub (K6250)
<b>11</b>	I/O Expansion Hub Connections
<b>12</b>	Mounting the I/O Expansion Hub
<b>13</b>	VESA Wall Mount Storage Enclosure Installation (K6255)
<b>14</b>	Additional information

This page was intentionally left blank

# Your Helix Terminal

**M6250-02**



## Helix Stand

Truly flexible design allows for multiple options and configurations. Shift from normal to low profile in seconds.

### Attach and detach

Quickly attaches and detaches for multiple mounting configurations.



## Unboxing the terminal

Remove the terminal from the box by grasping the sides of the foam end caps to slide the terminal out.

- DO NOT pull the terminal out of the box by lifting on the anti-static plastic bag. This may result in damage to the terminal.

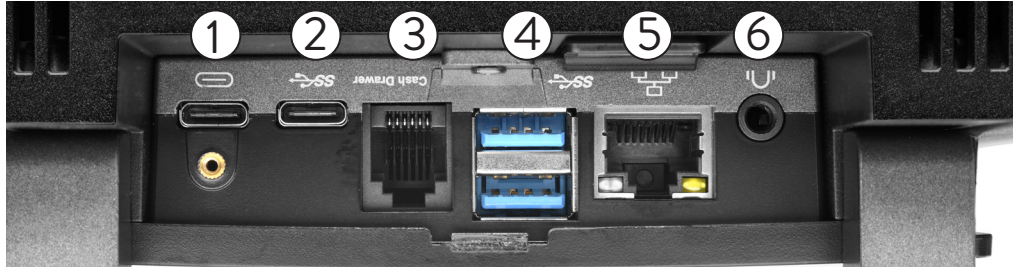
## Care of equipment

Clean the terminal periodically with a soft damp cloth. Magnetic card readers should also be cleaned periodically by using an alcohol solution and a cleaning card.

- Never use abrasive materials to clean.
- Never allow a unit to drop.
- Never allow napkins, boxes, or other objects to block air vents on the terminal or I/O Expansion Hub. Adequate airflow is necessary for the terminal to function correctly.
- Make sure a nylon or rubber grommet (washer) protects each hole drilled through the counter top and other metal surfaces. Metal edges may cut through cables.
- Always turn off or unplug units during power failures.

## Main I/O Connections

Fold the touch screen back to access the I/O well.



- ① Power Input
- ③ Cash Drawer
- ⑤ LAN Port
- ② USB C
- ④ USB 3.0
- ⑥ Audio Out

## Connecting power to the terminal

Remove the magnetic backing to route the cord from back to front. Fold the touch screen back to access the I/O well. Plug in the power cable and then secure with a flat head screw driver. Fit the magnetic cover back into place to conceal the cord. The terminal will automatically turn on when connected to a power source.



## Powering the terminal ON/OFF

To turn **ON** hold down the power button for **3 seconds**.

To turn **OFF** hold down the power button for **5-6 seconds**.



## Installing the Biometric Reader (K6252)

Use a flat-head screwdriver to remove the receptacle cover. Slide the biometric reader into place and click into position by lightly pushing into the frame.



## Installing the Magnetic Swipe Reader (K6251)

Use a flat-head screwdriver to remove the receptacle cover. Position the MSR by lining up the screw holes and fasten the two screws with a Phillips-head driver.





## Installing the 2x20 Customer Display (K6253)

Remove the display mount cover and the customer display mount cover strip.



Plug in the display connector and align the display hinges. Slide in the display hinges evenly.



Fasten all (4) Phillips-head screws that align the hinges and the display mount. Replace the display mount cover.



## Installing the 9.7" Customer Display (K6254 / K6254T)

Remove the display mount cover and the customer display mount cover strip.



Plug in the display connector and align the display hinges. Slide in the display hinges evenly. Lift the display while holding the mounting points in place.



Fasten all (4) Phillips-head screws that align the hinges and the touch display mount. Replace the display mount cover.



## I/O Expansion Hub (K6250)

The I/O Expansion Hub can be used to support additional peripheral connections or when a serial port connection is required.



- |         |            |                     |                     |               |                         |
|---------|------------|---------------------|---------------------|---------------|-------------------------|
| ① USB-C | ③ USB-C    | ⑤ Powered USB (24V) | ⑦ Power in          | ⑨ Cash Drawer | ⑪ USB 2.0               |
| ② HDMI  | ④ Ethernet | ⑥ Powered USB (12V) | ⑧ Powered USB (12V) | ⑩ USB 3.0     | ⑫ Serial Port A (COM 4) |
|         |            |                     |                     |               | ⑬ Serial Port B (COM 5) |

## I/O Expansion Hub Connections

- If the box will be sitting on a flat surface, remove the (4) shoulder screws and mounting plate. Attach the rubber feet to the bottom (included).
- The HDMI port requires attaching the non-locking USB-C cable (included) to the USB-C port ① on the I/O Expansion Hub and to the Helix terminal.
- Attach the locking USB-C cable from the terminal I/O well to the red USB-C port ③ on the I/O Expansion Hub. Secure using the thumbscrew.
- Attach the Ethernet cable for network connection to the Ethernet port ④ on the I/O Expansion Hub.
- Plug in any other peripherals required by the terminal.
- Connect the 24v power cable to the round 24v DC Power IN connection ⑦ on the I/O Expansion Hub. Ensure locking collar on power connection is retracted when connecting/disconnecting power cable



Proper Installation



Locking Collar Retracted



Locking Collar Normal State

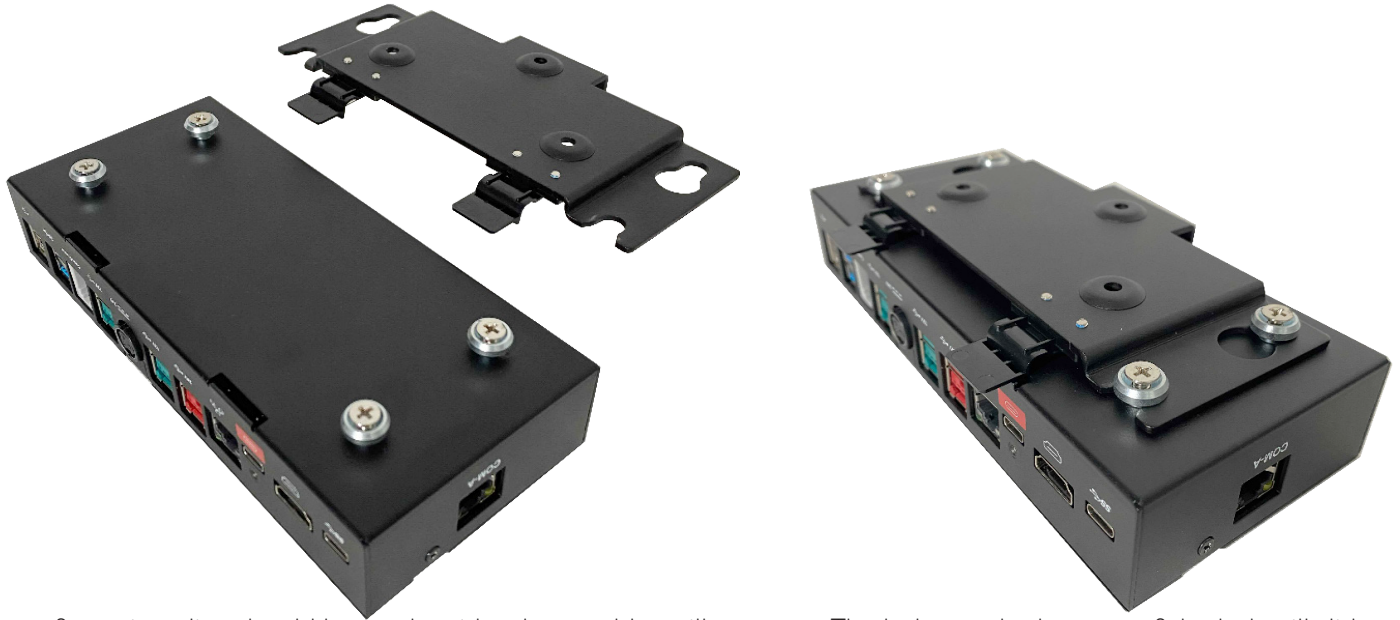


Locking Collar Retracted

**Note:** Connecting the power cable will automatically power on the system (if the AC power is connected to the brick).

## Mounting the I/O Expansion Hub

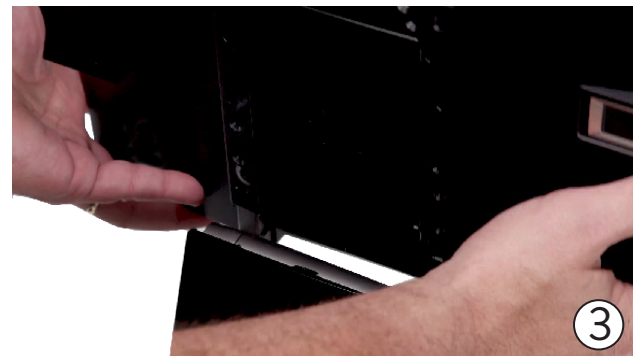
Using the mounting bracket will allow you to secure the I/O Expansion Hub to a wall or surface area. It's important to select an area that will remain clean and dry.



The two fastening clips should be on the side where cables will connect. The bolts on the bottom of the hub will slide and lock into place. The two fastening clips should lock over the front of the hub to prevent it from sliding out.

## Removing the Panel from the Pedestal

The Helix terminal can be removed from its pedestal to be mounted on any standard VESA compatible (100x100mm) wall mount.



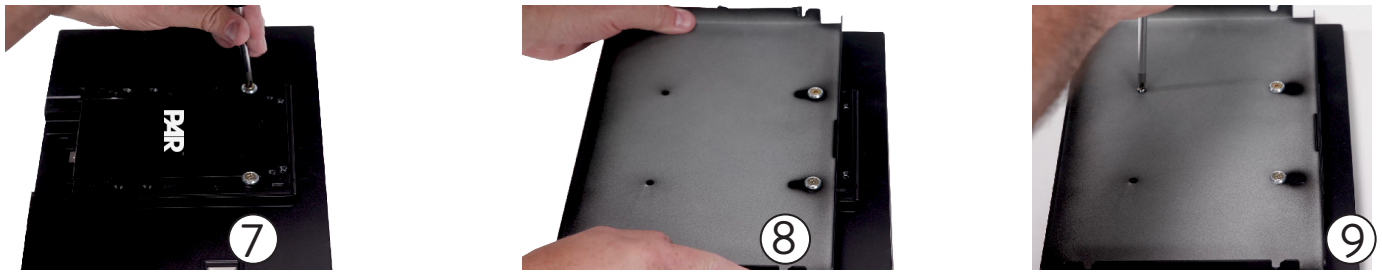
To prepare the Helix terminal for VESA mounting, unplug any existing connections from the I/O well. Remove the back cover and unfasten the four exposed screws. Lift the screen off of the base and lay flat on a clean flat surface to continue. If you are using the PAR VESA Wall Mount (K6255) continue through **steps 4 to 12** (below).

## VESA Wall Mount Storage Enclosure Installation (K6255)

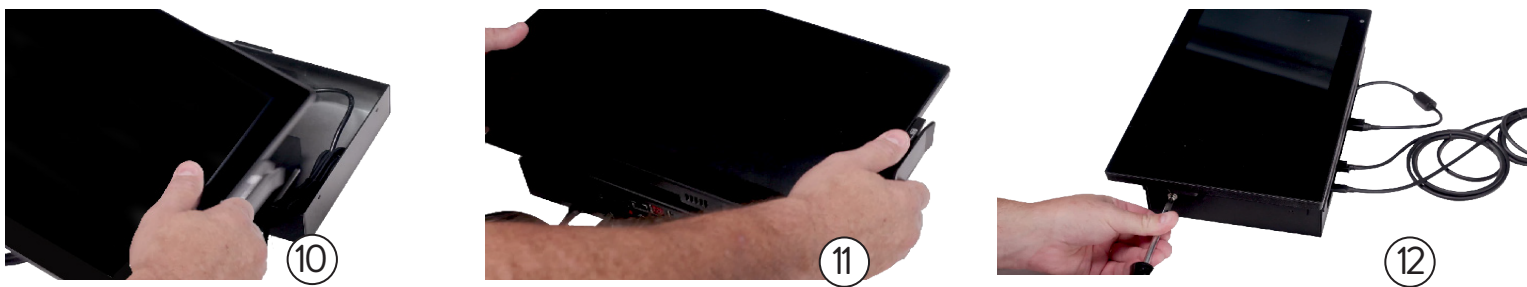
Mount the backplate assembly on your selected location. Insert the I/O Expansion Hub by sliding it into place. Fasten the power brick with zip ties. Connect all cables required for operation.



Affix the two shoulder screws onto the back of the Helix display. Mount the front plate to the display assembly by placing the slotted holes over the shoulder screws and sliding down. Fasten two screws in the two remaining open holes below the slot positions.



Hook the display assembly at the top of the mounted wall assembly by inserting the metal tab into the groove. Tighten the two side screws.



## Additional information

### Model Specifications

#### M6250-02

Apollo Lake (Celeron) CPU, 13.3" screen, 8GB memory, 128GB SSD POS Terminal, 12V/4.17A Power Supply.



PARTECH, INC  
Centurion House, London Road,  
Staines-upon-Thames, TW184AX, UK

### Electrical and Operating Requirements

**Line voltage:** 100-240 VAC

**Frequency:** 50/60 Hz

**Operating temperature:** 41° to 104° F (5° to 40° C)

**Relative humidity:** 10% to 90% non-condensing

### External Monitor Compatibility

An externally mounted display can be connected to the terminal by using the I/O Expansion Hub. You will utilize the HDMI port from the Expansion Hub and the second USB-C cable directly from the Helix terminal.

### Battery Warnings

**CAUTION** - Replacement of BATTERY with an incorrect type can defeat a SAFEGUARD (for example, in the case of some lithium BATTERY types)

**CAUTION** - Disposal of a BATTERY into fire or hot oven, or mechanically crushing or cutting of a BATTERY, can result in an explosion

**CAUTION** - Leaving a BATTERY in an extremely high temperature surrounding environment can result in an EXPLOSION or the leakage of flammable liquid or gas

**CAUTION** - A BATTERY subjected to extremely low air pressure may result in an explosion or the leakage of flammable liquid or gas

**CAUTION** - Risk of fire or explosion if the battery is replaced by an incorrect type. Dispose of used batteries according to the instructions

**ATTENTION** - Remplacement d'une BATTERIE par un type incorrect qui peut annuler un SAFEGUARD (par exemple, dans le cas de certains types de BATTERIE au lithium)

**ATTENTION** - L'élimination d'une BATTERIE dans le feu ou dans un four chaud, ou l'écrasement ou le découpage mécanique d'une BATTERIE, pouvant entraîner une EXPLOSION

**ATTENTION** - Jetez les batteries, les blocs d'alimentation, le chargeur de batterie et la station de base conformément aux exigences fédérales, nationales et locales. Si vous préférez, renvoyez ces composants au centre de service PAR pour recyclage

**ATTENTION** - Laisser une BATTERIE dans un environnement à température extrêmement élevée pouvant entraîner une EXPLOSION ou une fuite de liquide ou de gaz inflammable

**ATTENTION** - Une BATTERIE soumise à une pression d'air extrêmement basse pouvant entraîner une explosion ou une fuite de liquide ou de gaz inflammable

**ATTENTION** - Risque d'incendie ou d'explosion si la batterie est remplacée par un type incorrect. Jetez les piles usagées conformément aux instructions

**ATTENTION** - De nombreuses batteries rechargeables doivent être recyclées par les lois locales, étatiques/provinciales et nationales. Pour recycler/éliminer correctement la batterie ou le bloc-batterie, respectez toujours les réglementations locales en matière d'élimination des déchets solides. De plus, aux États-Unis et au Canada, PAR s'associe à Call2Recycle (RBRC) pour vous fournir un service de recyclage afin de vous assurer que les piles rechargeables de nos produits sont correctement recyclées. Pour vous aider à utiliser ce service, appelez la ligne d'assistance d'informations sur le recyclage des batteries Call2Recycle au 1-800-8-BATTERY ou consultez les conseils de recyclage des batteries Call2Recycle en ligne sur [www.call2recycle.org](http://www.call2recycle.org)

### Limited Warranty and Service

One year mail-in warranty, additional service options are available.

### Support Information

#### For Service:

USA: 800.382.6200

#### Parts:

USA: 800.PAR.PART

#### Driver Support

[support.partech.com](http://support.partech.com)



This material has been created in order to accommodate a wide range of restaurant operations and your specific business practices and system configuration may differ slightly from what is represented in this material. While ParTech, Inc. ("PAR") takes great care to ensure the accuracy of these materials, all material is provided "as is" without warranty of any kind, either express or implied, including, but not limited to, warranties of merchantability or fitness for a particular purpose. PAR does not make any warranties or representations that the materials will meet your requirements or that the operations of the hardware will be uninterrupted or error free.

Trademark Notices: The PAR logo is a trademarks of PAR Technology Corporation, the parent company of ParTech, Inc. or its affiliates. All other product names used throughout this material are trademarks of the respective companies. No such use of any trademark is intended to convey endorsement or other affiliation with these companies.

Reproduction: Copyright © 2022 ParTech, Inc. All rights reserved. This publication, or any part thereof, may not be reproduced or transmitted in any form or by any means, electronic or mechanical, including photocopying, recording, storage in an information retrieval system, or otherwise, without the prior written permission of ParTech, Inc., PAR Technology Park, 8383 Seneca Turnpike, New Hartford, NY 13413-4991 USA