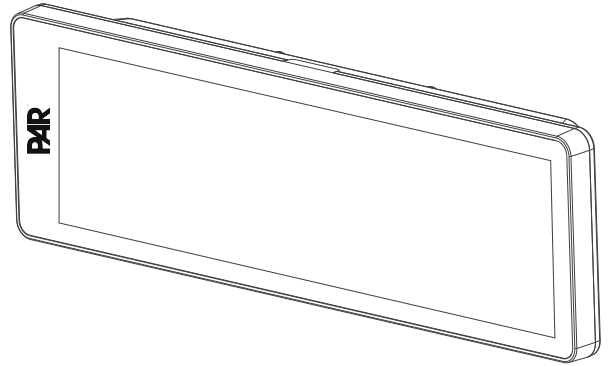




PAR KDS Bump Bar Quick Reference Guide

Thank You!

Thank you for purchasing the PAR KDS. With technology specifically designed for your environment, your success is our passion.



For product information and full user guide visit: <https://support.partech.com/>

1 Examine the Shipment



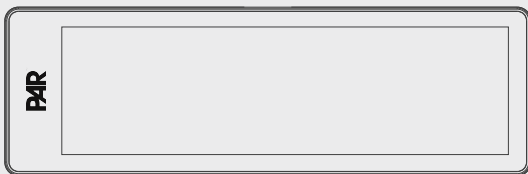
Please ensure all equipment is present.

Report any missing or damaged equipment to your PAR Salesperson or PAR Channel Partner.

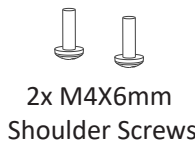


2 Inventory Components

Ensure you have the items listed below in your order.



KDS Bump Bar



2x M4X6mm Shoulder Screws



Bump Bar mounting Brackets



15' Serial Connection Cable

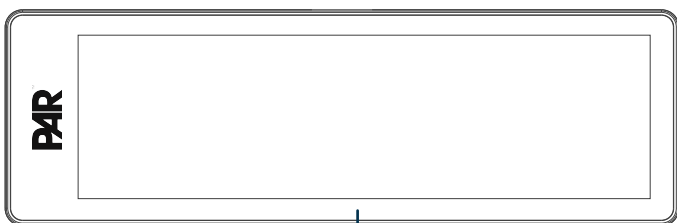


2x M4X6mm Black Round Head Screws with Washer



15' USB Connection Cable

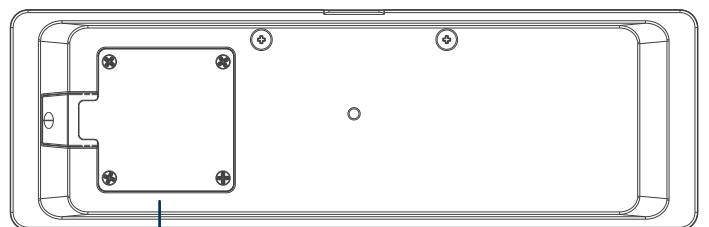
Front



Touch Screen

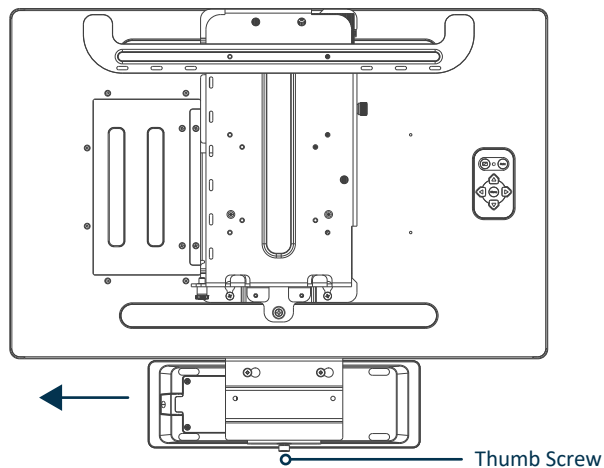
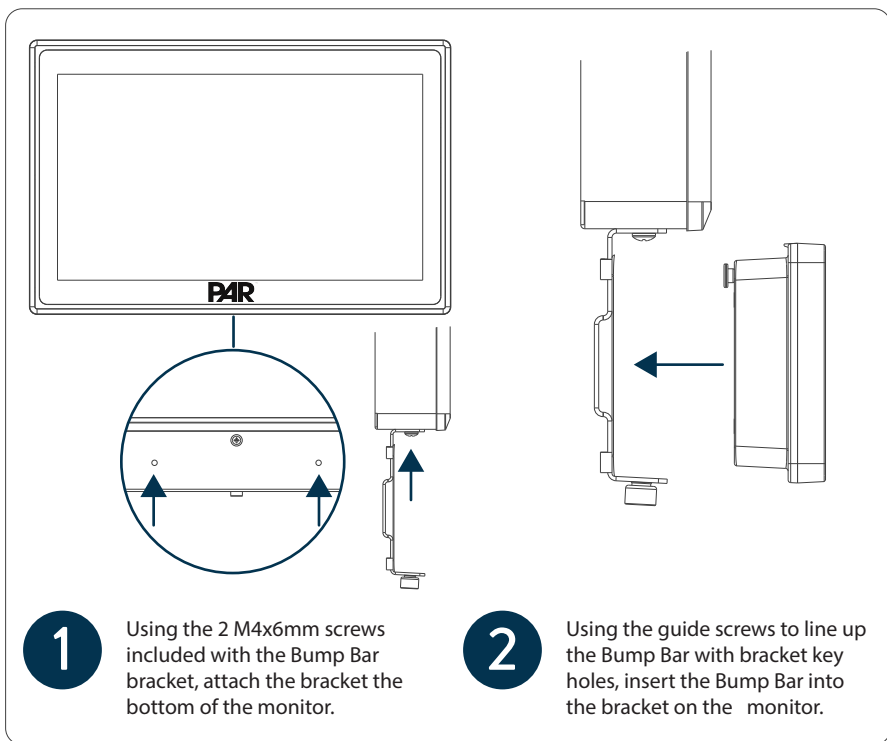
Lorem ipsum

Back



Cable Well Cover

Installing the Bump Bar on to the PAR KDS Monitor



While looking at the back of the bracket slide the Bump Bar to the left to secure in the key holes.

Plug the Bump Bar cable into the controller.

Replacing the Bump Bar Cable



WARNING: Only a trained technician should remove the cover of the Bump Bar to remove/replace the Bump Bar insert.

AVERTISSEMENT: Seul un technicien qualifié est habilité à retirer le capot du pare-chocs pour retirer / remplacer l'insert Bump Bar

